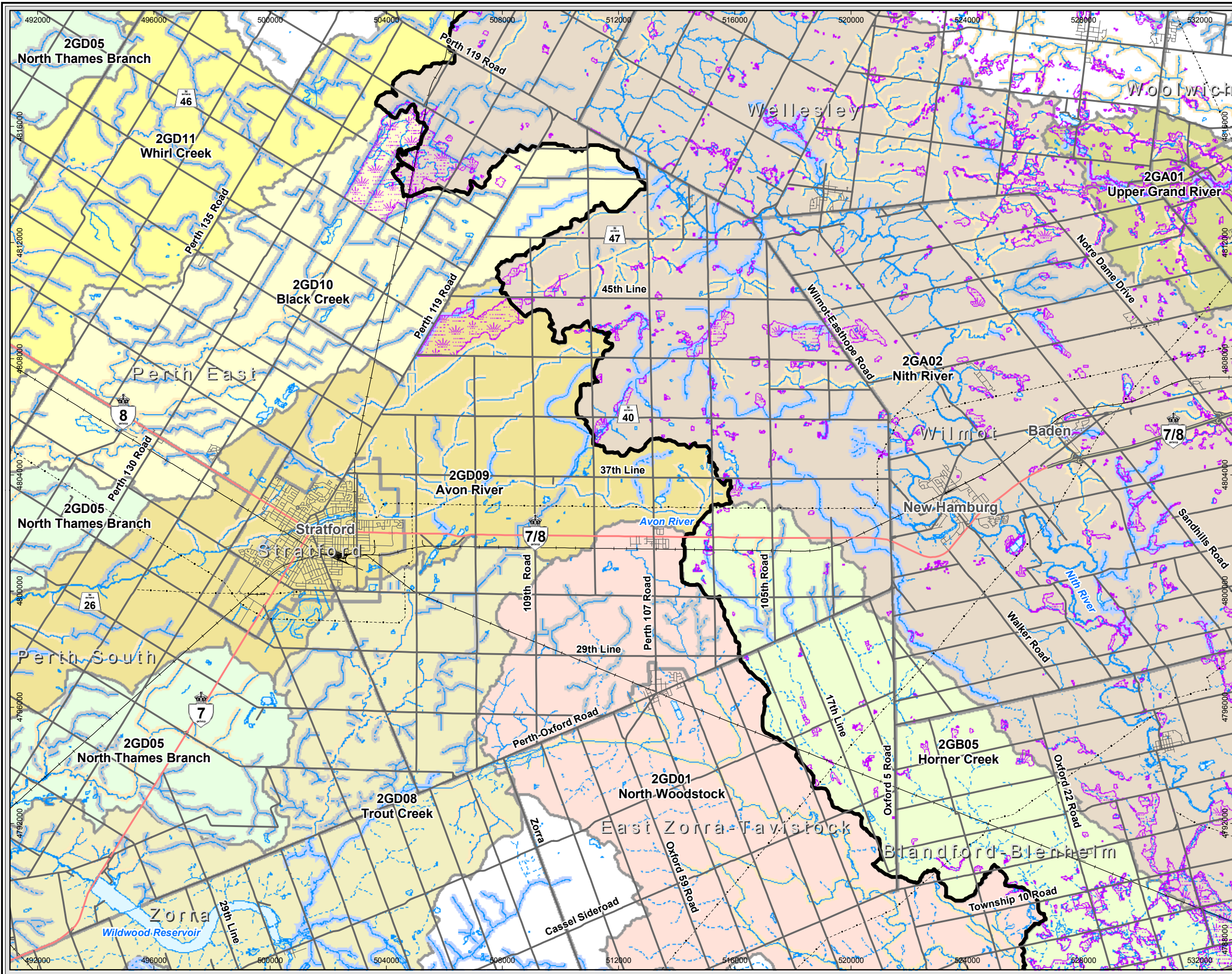


Map Document: (N:\Projects\2007\70347\2008\Final\GIS\Spatial\Map\XDe\Revised\Map\70347\AquaticResources-11x17.mxd)  
05/06/2008 - 8:16:24 AM



**Legend**

- Transmission Line
- Railway
- Freeway
- Highway
- Major Road
- Local Road
- Municipal Division
- GRCA Wetland
- Waterbody
- Cartographic Wetland

**Stream Type & Thermal Assessment**

- Intermittent, Coldwater
- Intermittent, Coolwater
- Intermittent, Warmwater
- Intermittent, Unassigned
- Intermittent, No data
- Permanent, Coldwater
- Permanent, Coolwater
- Permanent, Warmwater
- Permanent, Unassigned
- Permanent, No data

**Quaternary Watersheds**

**02GA Grand River**

- 2GA01 Upper Grand River
- 2GA02 Nith River
- 2GB05 Horner Creek

**02GD Thames River**

- 2GD01 North Woodstock
- 2GD05 North Thames Branch
- 2GD08 Trout Creek
- 2GD09 Avon River
- 2GD10 Black Creek
- 2GD11 Whirl Creek

Basemapping from Ontario Ministry of Natural Resources

0 0.5 1 2 3 4 5  
Km  
1:125,000  
UTM Zone 17N, NAD 83

Highway 7/8 Transportation  
Corridor Planning  
and Class EA Study

**Aquatic Resources**

June 2008  
Project 70347

Exhibit 3.1