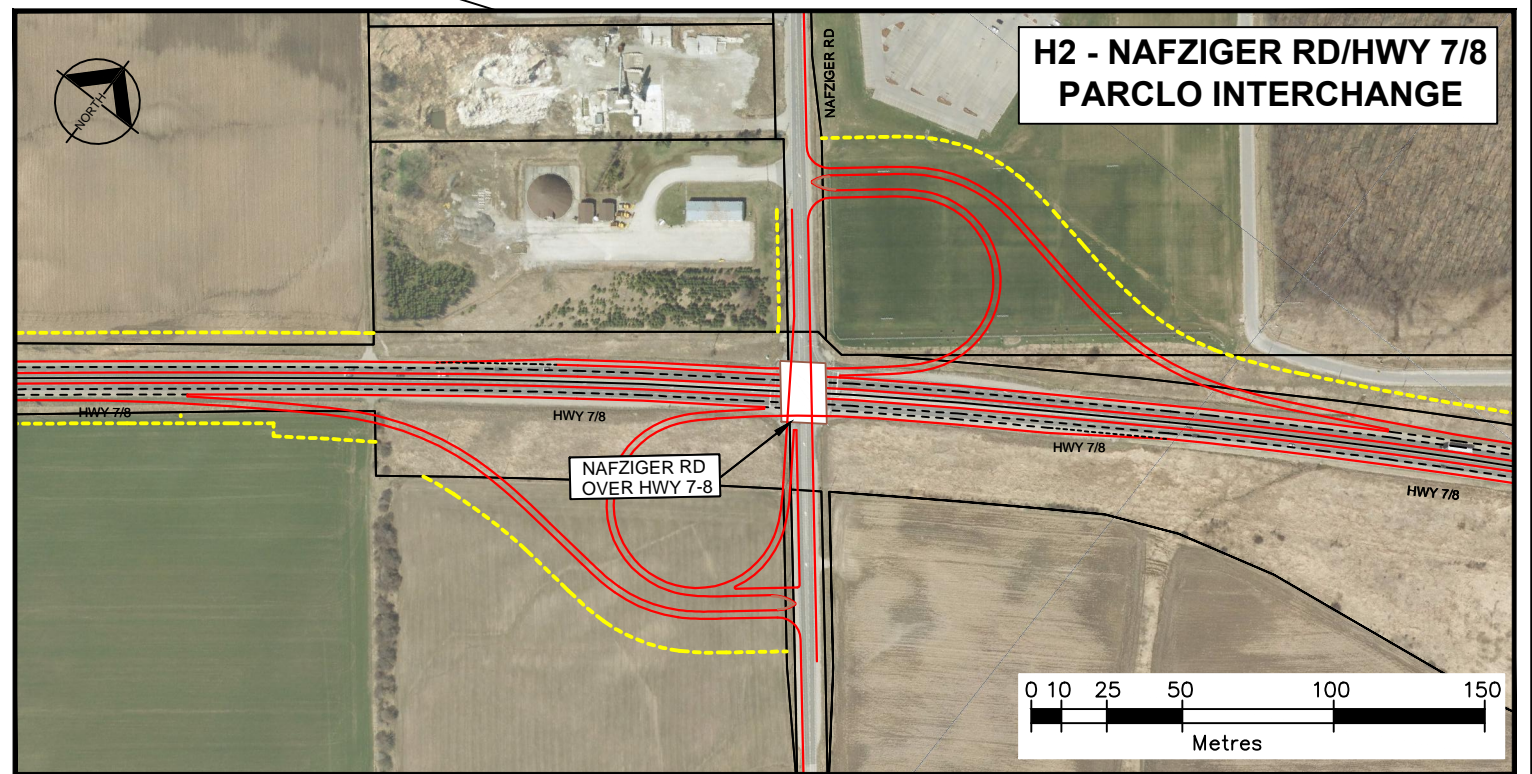
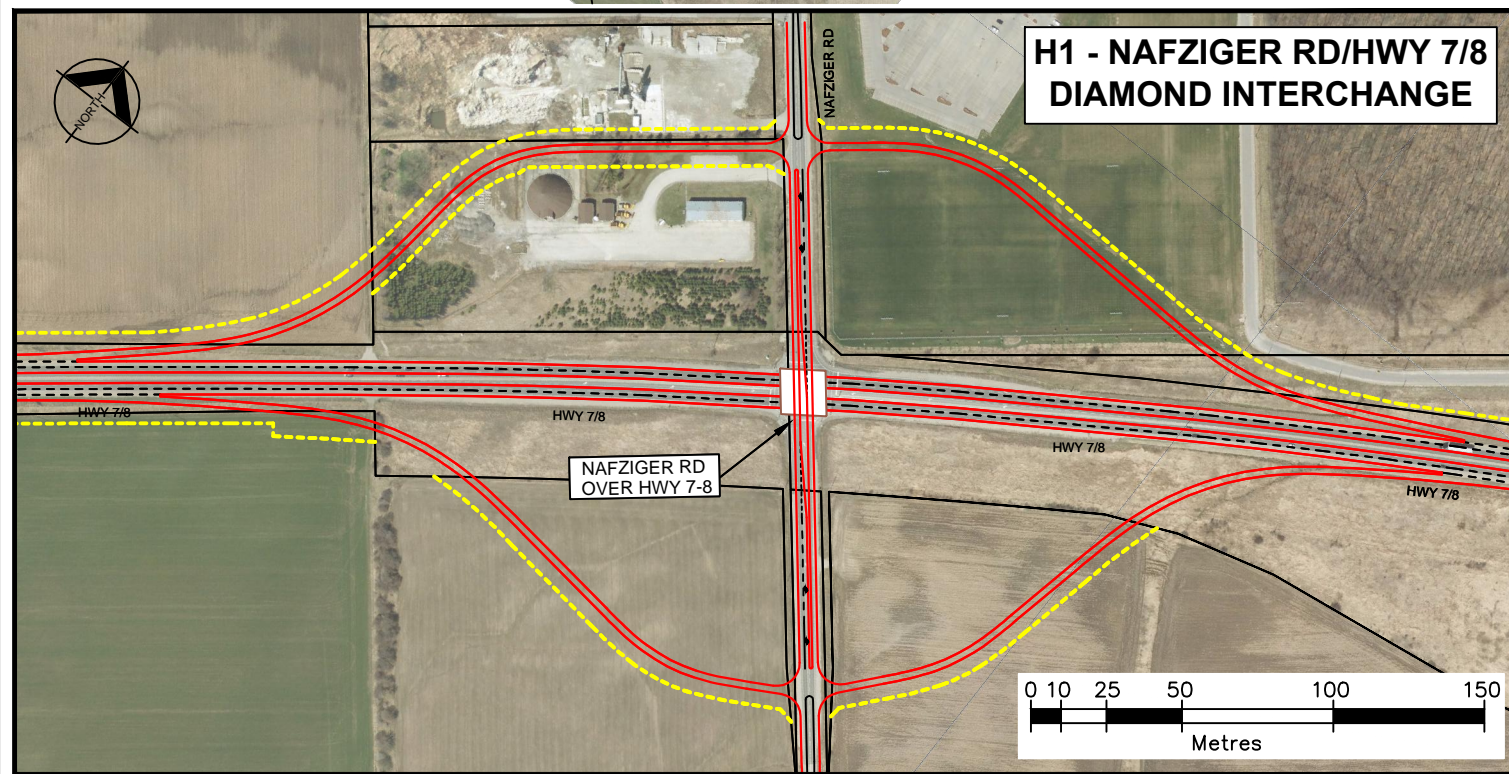
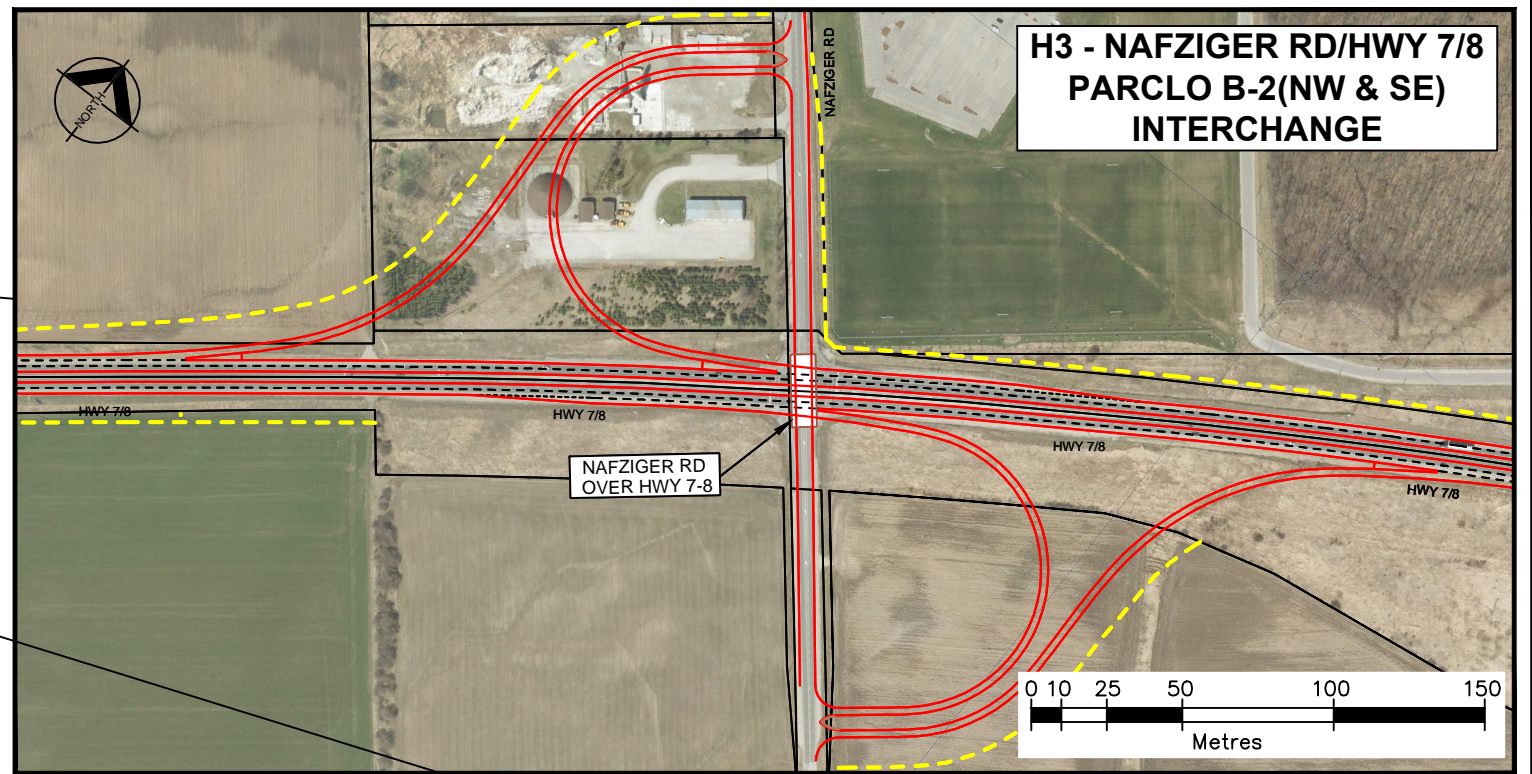
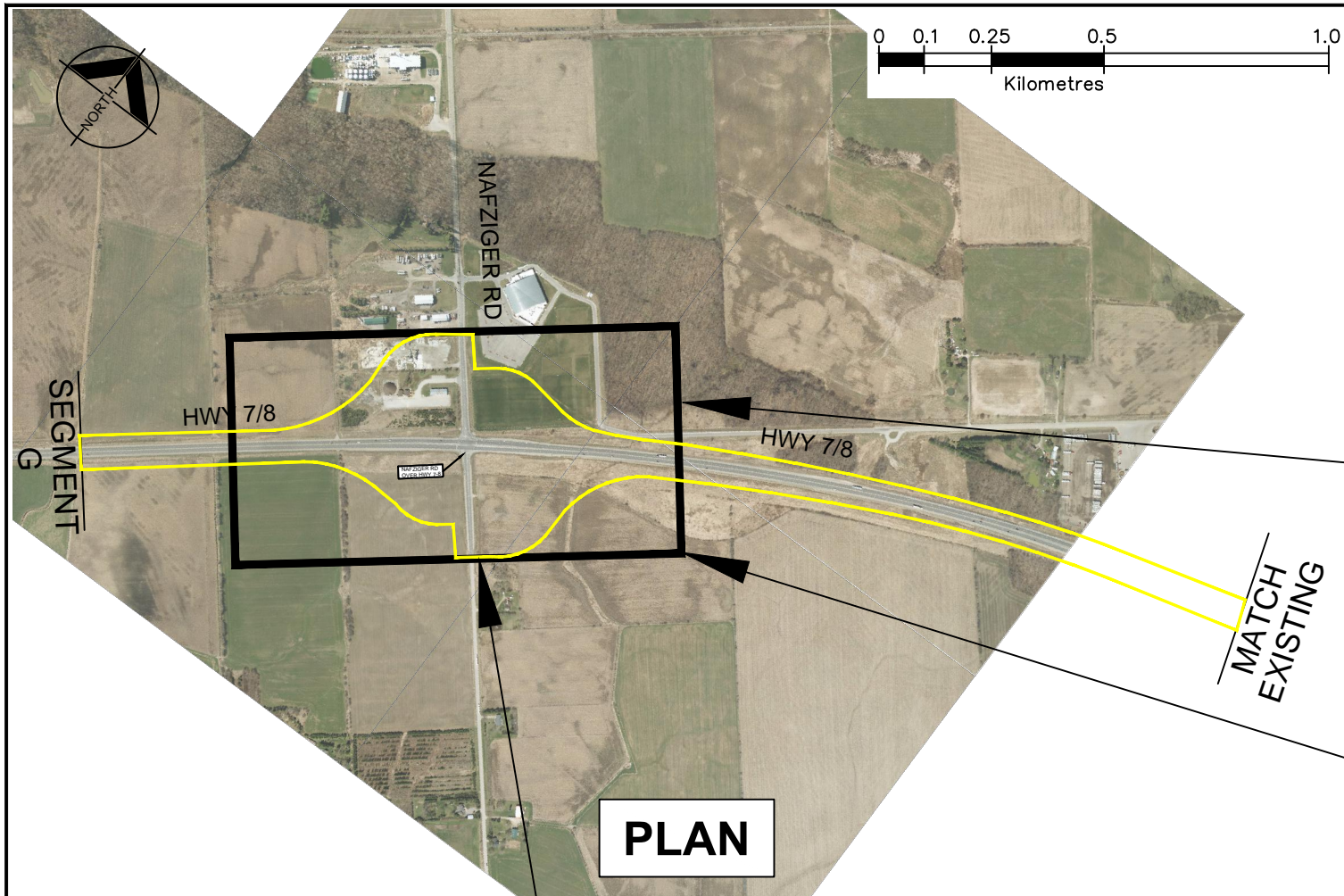


APPENDIX H

Segment H Cross Section and Intersection Treatment Alternatives



G:\PROJECTS\242-2012-0503 Hwy 7&8 TCP & EA\000-CADD\040 CADD-BIM\WIP\CUTM Z17\Preliminary Design\Sheets\11by17\Sample_Segment_C_Romeo-St.dwg 02/27/2012 1:27:48 PM EDT

This drawing has been prepared for the use of AECOM's client and may not be used, reproduced or relied upon by third parties, except as agreed by AECOM and its client, as required by law or for use by governmental reviewing agencies. AECOM accepts no responsibility, and denies any liability whatsoever, to any party that modifies this drawing without AECOM's express written consent.
Do not scale this document. All measurements must be obtained from stated dimensions.



AECOM Canada Ltd.
300 Water Street, Whitby, Ontario, Canada L1N 9J2
T905.668.9363 F905.668.0221

No.	DATE	BY	ISSUES / REVISIONS

CLIENT:



DRAWN BY:
B HODSON
DESIGNED BY:
SCALE:
CHECKED BY:
APPROVED BY:
DATE:
JULY 2012

PROJECT: HIGHWAY 7/8 TRANSPORTATION CORRIDOR & CLASS EA STUDY
PRELIMINARY DESIGN ALTERNATIVES
DRAWING: SEGMENT H
NAFZIGER RD /HWY 7/8
ALTERNATIVE H1, H2, H3

PROJECT No.: 60117929
DRAWING No.: SH-1

G:\PROJECTS\242-2012-0503 Hwy 7&8 TCP & EA\000-CADD\040 CADD-BIM\WIP\CUTM Z17\Preliminary Design\Sheets\11by17\Section H1&H2-H-Alt-1-3-NAFZIGER-11x17.dwg - July 24 2012